



475 Park Avenue at 57th Street, New York, New York 10022
Tel: (212) 355-4545 Fax: (212) 355-4547 www.forumgallery.com

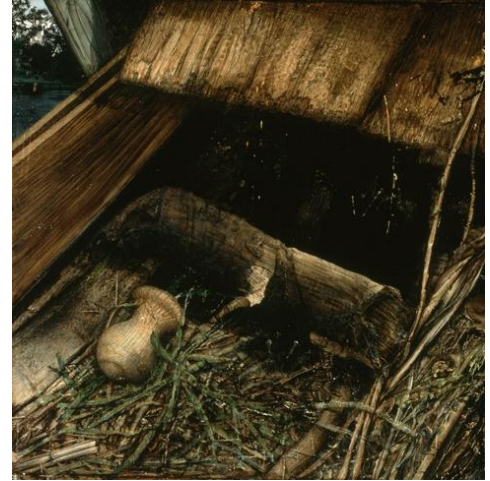
Robert Fishko, *Director*

GREGORY GILLESPIE
(1936-2000)

Burial Place, 1985
oil on mylar on board
18 ½ x 18 inches

Provenance

The Artist
[Forum Gallery, New York]
Private Collection



Exhibited

Gregory Gillespie: Recent Paintings, The Real and the Imagined, Forum Gallery,
New York, NY, March 1 – 29, 1986

Gregory Gillespie, Harcourts Modern and Contemporary Art, San Francisco, CA, May 1992

Gregory Gillespie (1936-2000), Forum Gallery, New York, NY,
January 19 – February 25, 2006

Modern & Contemporary Landscapes, Forum Gallery, Los Angeles, CA,
January 12 – March 3, 2007

Gregory Gillespie: Paintings, Forum Gallery, New York, NY, February 25 – May 1, 2010

Peace on Earth, Forum Gallery, New York, NY, November 25 – December 30, 2011

Literature

Gregory Gillespie: Recent Paintings, The Real and the Imagined. Forum Gallery,
New York, NY, 1986, p. 9, Illustrated.

Gregory Gillespie, Harcourts Modern and Contemporary Art, San Francisco, CA, 1992,
pl. 3, p. 11, Illustrated.

Note

“In a piece like *Burial Place*, slanted into the scene – it looks like a storm cellar, drenched rotting browns patched over with hopeful, stringy green spears of grass and weeds – is the overworld, a sunlit airy place, and the sky. The picture is one of the many cellarscapes or gutterscapes Gillespie has made over the years; they are among his most amazing works, offering creepily sensuous views of the telluric world, of fungi, crushed grass, mud and grit, where the physical world is densest with corruption. *Burial Place* includes that piece of the world and of consciousness, the sky, home to so many of our gods, but sets it on the margins; the image is dominated by the quickened sexuality of matter, and by the darkness opening to an underworld.”

_W.S. Di Piero, exhibition presented by Harcourts Modern and Contemporary Art, San Francisco, CA, 1992; catalogue essay.