



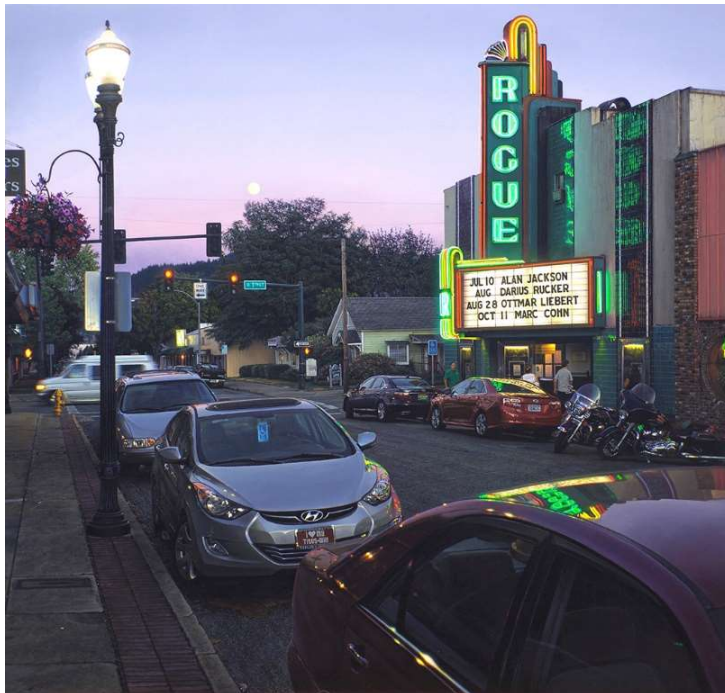
475 Park Avenue at 57th Street, New York, New York 10022  
Tel: (212) 355-4545 Fax: (212) 355-4547 www.forumgallery.com

Robert Fishko, *Director*

For Immediate Release

# *Dawn to Dusk*

June 12 – August 1, 2025



**Davis Cone**, *Rogue / Summer Moonrise*, 2024, acrylic on canvas, 35 x 36 3/4 inches

**New York, NY** – Air, light and atmosphere are the subjects of the luminous works by twenty-three artists in the exhibition **DAWN TO DUSK**, opening June 12th and continuing through August 1st, 2025 at Forum Gallery, New York. Whether depicting people or places, the works in the exhibition are imbued with the deep feeling each artist employs by painting the unseen elements that resonate in the surround.

Expansive landscapes by **Robert Bauer**, **William Beckman** and **Tula Telfair** offer the majesty of sky and sun above the low horizon of open meadows while **Gregory Gillespie**, **Paul Fenniak** and **Rance Jones** illuminate the figures in their scene paintings with the light and shadow of day and night. Gillespie's baseball game and Beckman's plowed farm field are miles apart in many ways but there is a kinship in their objectivity, while Bauer and Telfair put their impressions forward and leave it to us to provide imaginative memories to complete the pictures. In each landscape, the sense of temperature and humidity is palpable.

**DAWN TO DUSK** is also an opportunity to see exceptional, precise realism. On view will be an impressive new movie theatre painting by renowned photorealist, **Davis Cone**; twilight watercolors capturing the atmosphere of Coney Island by **Frederick Brosen**; magical works on paper by **G. Daniel Massad** and **Anthony Mitri**, and the latest poetic New England oil by **Linden Frederick**; these are shown with classic urban scenes by **Robert Cottingham** and **Craig McPherson**. All are artists of consummate technical skill, but here they are united by their remarkable ability to convey emotion and personal involvement with the subject through the care and concern they put into every detail of each work.

Morning light yields different truths to the figures in paintings by **Alan Feltus**, **Michèle Fenniak** and **Alyssa Monks** but the sense of time is clear to each of them.

The works in **DAWN TO DUSK** are explorations of time and space, light and shadow, sunrise and twilight. The exhibition is on view Monday through Friday, 10 AM to 5:30 PM at Forum Gallery, 475 Park Avenue at 57th Street, New York from June 12th to August 1st, 2025.

You are invited to explore our Online Viewing Room for **DAWN TO DUSK** at:  
<https://viewingroom.forumgallery.com/viewing-room/dawn-to-dusk>

###

**Forum Gallery is located at 475 Park Avenue at 57<sup>th</sup> Street, New York, NY 10022. *DAWN TO DUSK* opens on Thursday, June 12, 2025, and continues through Friday, August 1, 2025. The gallery is open to the public Monday through Friday from 10am to 5:30pm, closed Saturdays, Sundays and holidays through the Labor Day holiday.**

For press inquiries, please contact 212-355-4545; [asja@forumgallery.com](mailto:asja@forumgallery.com).

For sales inquiries, please contact **Nicola Lorenz**, Executive Director or **Marjorie Van Cura**, Associate Director, 212-355-4545; [gallery@forumgallery.com](mailto:gallery@forumgallery.com).



**Paul Fenniak, *Rooftop*, 2013, oil on canvas, 42 x 54 inches**