

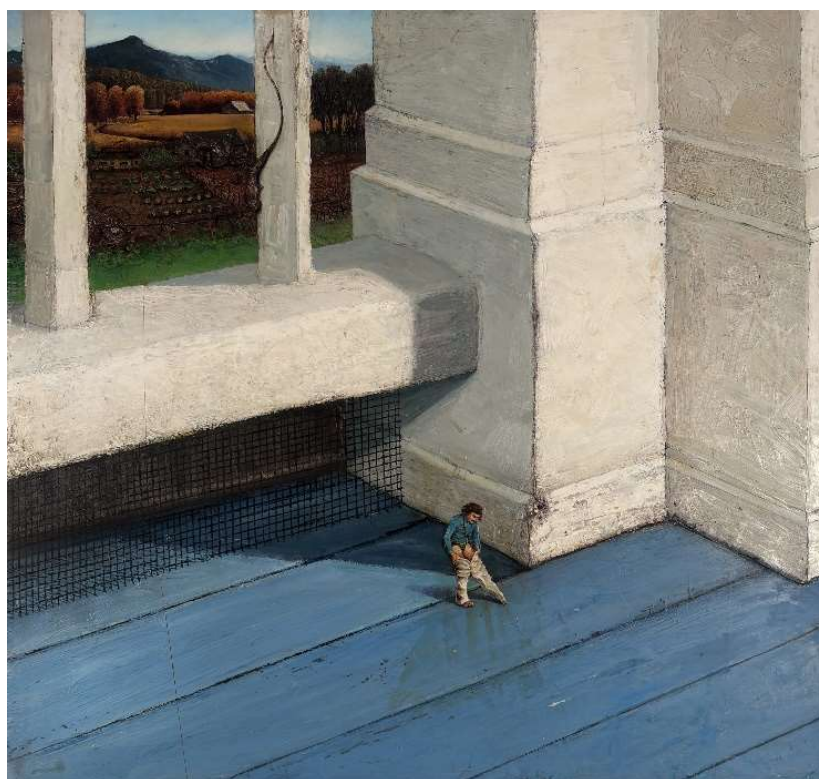


475 Park Avenue at 57th Street, New York, New York 10022  
Tel: (212) 355-4545 Fax: (212) 355-4547 www.forumgallery.com

Robert Fishko, *Director*  
For Immediate Release

## *What's New?*

September 12 – November 9, 2024



Gregory Gillespie, *Porch, Landscape, Lizard and Man*, 1988-89, oil and alkyd on board, 28 x 30 inches

**New York, NY** – Forum Gallery is pleased to present *What's New?*, our first exhibition of the Fall season spotlighting works new to the gallery. Dating from 1917 to the present, the exhibition will feature twenty-two oil paintings, watercolors, pastel and pencil works on paper by fourteen artists. *What's New?* opens on September 12<sup>th</sup> and continues through November 9<sup>th</sup>.

**Peter Blume** (1906-1992) was known for his exploration of grand themes of growth, metamorphosis, life, and death. His remarkable painting, *Winter*, 1964 (48" x 60"), the first of his monumental series on the four seasons, will be on view as well as vibrant expressionist abstractions from the 1950s by **Elaine de Kooning** (1918-1989), infused with her untamable energy; social realist observations from 1935 by **Isabel Bishop** (1902-1988); three visionary paintings by the inimitable **Gregory Gillespie** (1936-2000) created between 1974 and 1989 and not seen in public since entering private collections decades ago; and a lyrical pastel of a rural scene by **Max Weber** (1881-1961), the earliest work in the show and one you won't want to miss!

*What's New?* will present two watercolors from the 1960s by **Andrew Wyeth** (1917-2009). Each emblematic of Wyeth's dedication to the depiction of the ever-changing rural American world in which he

chose to live, they feature snowy wintertime scenes of Chadds Ford; one from neighbor Tom Clark's property, and a second from the mill on Wyeth's personal grounds, now a part of the Brandywine River Museum.

Our contemporary artists have been hard at work in the studio and we are pleased to share with you their newest creations including **Rance Jones'** (b. 1965) largest watercolor to date, *St. James Cathedral* (30" x 39 ½"), a technical masterpiece and stunning expression of human achievement when moved by personal devotion; **Linden Frederick's** (b. 1953) delightful new *storyscape* titled *Weight of Winter* (30" x 30"); and **Alyssa Monks'** (b. 1977) recent figurative painting, *Between Here and There* (43" x 63") infused with emotional and psychological gravitas.

Fresh from the studio is **Tula Telfair's** (b. 1961) evocative new landscape painting that transports and envelops us, beckoning us to *Come Closer* (50" x 70"), as its title suggests; and *Memento Mei* (17 ½" x 17 ¼"), a gorgeous new poetic still life by **G. Daniel Massad** (b. 1946) who is known for his exquisite works in pastel.

Also recently through the doors of the gallery, we will present an arresting 1976 portrait by **William Beckman** (b. 1942) of his former wife Diana; a new absorbing, dreamlike narrative painting by **Paul Fenniak** (b. 1965); and two rare and illuminating paintings of vintage toys by Spanish artist **César Galicia** (b. 1957) that leap beyond representation to tell stories of contemporary life and the Artist's process.

We hope you will stop by soon to see what's new!

You are invited to explore our Online Viewing Room for *What's New?* at:  
<https://viewingroom.forumgallery.com/viewing-room/whats-new>

###

**Forum Gallery is located at 475 Park Avenue at 57<sup>th</sup> Street, New York, NY 10022. *What's New* begins on Thursday, September 12, 2024 and continues through Saturday, November 9, 2024. The gallery is open to the public Monday through Saturday from 10am to 5:30pm, closed Sundays and holidays.**

For press inquiries, please contact 212-355-4545; [asja@forumgallery.com](mailto:asja@forumgallery.com).

For sales inquiries, please contact **Nicola Lorenz**, Executive Director or **Marjorie Van Cura**, Associate Director, 212-355-4545; [gallery@forumgallery.com](mailto:gallery@forumgallery.com).



César Galicia, *Lufthansa*, 2012, mixed media on board, 17 ½ x 24 inches





Peter Blume, *Winter*, 1964, oil on canvas, 48 x 60 inches



Tula Telfair, *Come Closer*, 2024, oil on canvas, 50 x 70 inches



Linden Frederick, *Weight of Winter*, 2024, oil on linen, 30 x 30 inches





Alyssa Monks, *Between Here and There*, 2022, oil on linen, 43 x 63 inches



Elaine de Kooning, *Abstraction*, c. 1959, mixed media on artist board, 7 1/2 x 10 1/2 inches



G. Daniel Massad, *Memento Mei*, 2024, pastel on paper, 17 1/2 x 17 1/4 inches