



475 Park Avenue at 57th Street, New York, New York 10022

Tel: (212) 355-4545 Fax: (212) 355-4547 www.forumgallery.com

Robert Fishko, *Director*

GREGORY GILLESPIE

[1936 - 2000]

Red Mountain, 1995

oil, pencil and Xerox transfer on panel

16 1/4 x 10 inches

signed bottom right "*Gillespie*"

Provenance

The Artist

The Cartin Collection, Hartford, CT

Exhibited

A Unique American Vision: Paintings by Gregory Gillespie, curated by Donald D. Keyes,
Traveling exhibition:

Georgia Museum of Art, University of Georgia, Athens, GA

April 10 – May 30, 1999

Museum of Contemporary Art, San Diego, La Jolla, CA

June 12 – September 12, 1999

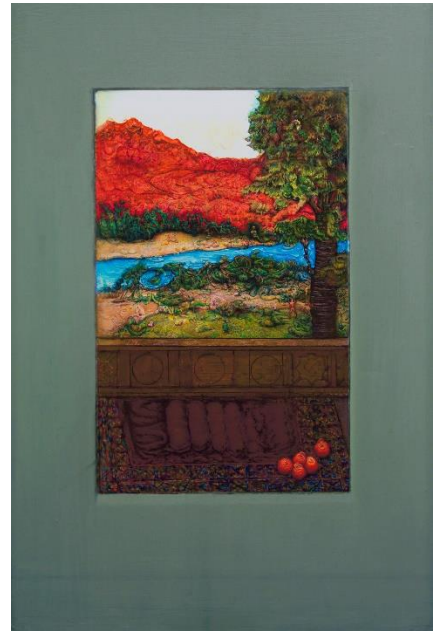
Massachusetts Institute of Technology, List Visual Arts Center, Cambridge, MA

October 8 – December 19, 1999

Butler Institute of American Art, Youngstown, OH

January 9 – March 5, 2000

Gregory Gillespie: New Paintings and Drawings, Forum Gallery, New York, NY,
April 18 - June 7, 1996



Literature

A Unique American Vision: Paintings by Gregory Gillespie, Essays by Rani M. Carr, Donald D. Keys and Carl Belz, 1999: Georgia Museum of Art, University of Georgia, cat. no. 33, p. 33, Illustrated (detail).

Gregory Gillespie, Forum Gallery, New York, NY, 1996, pg. 51, Illustrated.