



475 Park Avenue at 57th Street, New York, New York 10022  
Tel: (212) 355-4545 Fax: (212) 355-4547 www.forumgallery.com

Robert Fishko, *Director*

**REGINALD MARSH**

(1898-1954)

*Mr. Broe on the Manhattan Bridge*, 1936

tempera on board

24 x 18 inches

**Provenance**

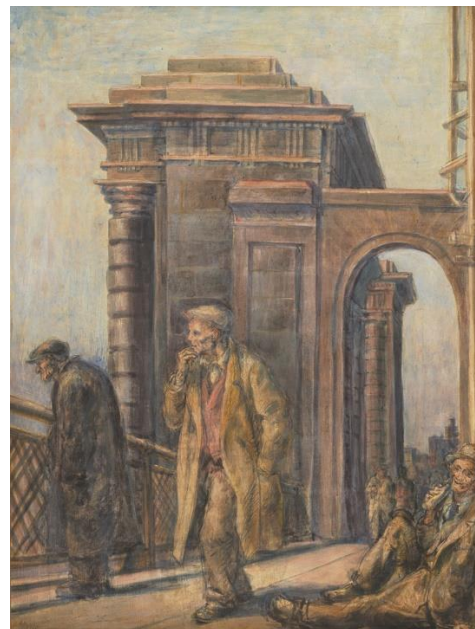
The Artist

Felicia Marsh (wife of the artist)

Frank Rehn Gallery, New York

Sheldon Ross Gallery, Birmingham, MI

Private Collection, Michigan



**Exhibited**

*Independent Visions: American Drawings and Watercolors*, DC Moore Gallery, New York, NY, April 14 – May 14, 2005, no. 32.